



## . PLATFORM 2 OF TRUCK STOP AND STAGING



Figure 2: Portion 293 and RR102

## 8. SITE LOCALITY

- The earmarked site is less than a 1km from the Cato Ridge rail exchange yard and about 3km and 5km from the Catcon Terminal via 2 road routes.
- Catcon terminal is operated by CRIP and Grindrod Logistics.



- The earmarked facility is also in proximity to the N3 freeway and is about 50km from the Port of Durban.

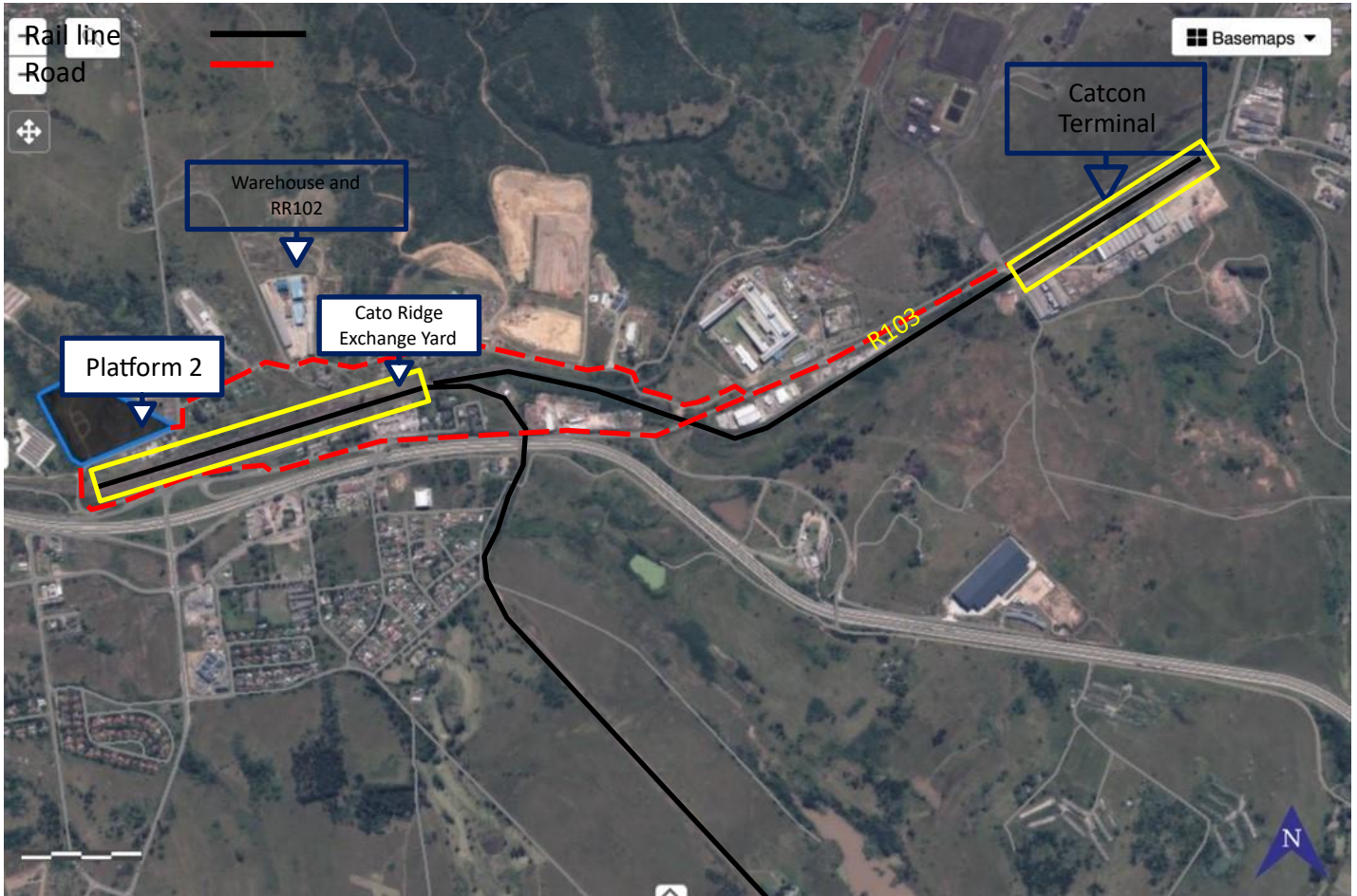


Figure 3: Site Locality

## 7. OPERATIONAL MODEL

It is expected that there will be three interface operations;

- TRAIN** – full containers will arrive to Catcon by train
- ROAD** – full containers will be offloaded by CRIP and will either be stored at the Grindrod depo or transported to the customers site directly.



Cato Ridge  
Inland  
PortCato  
Ridge  
Inland Port

- c) **STORAGE** – empties will either be stored at the customers site (RR102) or repositioned to GLO depo

## 8. OPERATIONAL EQUIPMENT

- The RR102 facility will allow for stacking capability of full and empties and other ancillary services,
- Container stacking will be done by means reach stacker where necessary,
- Minimal internal haulers/trucks will also be required to support reach stackers.

